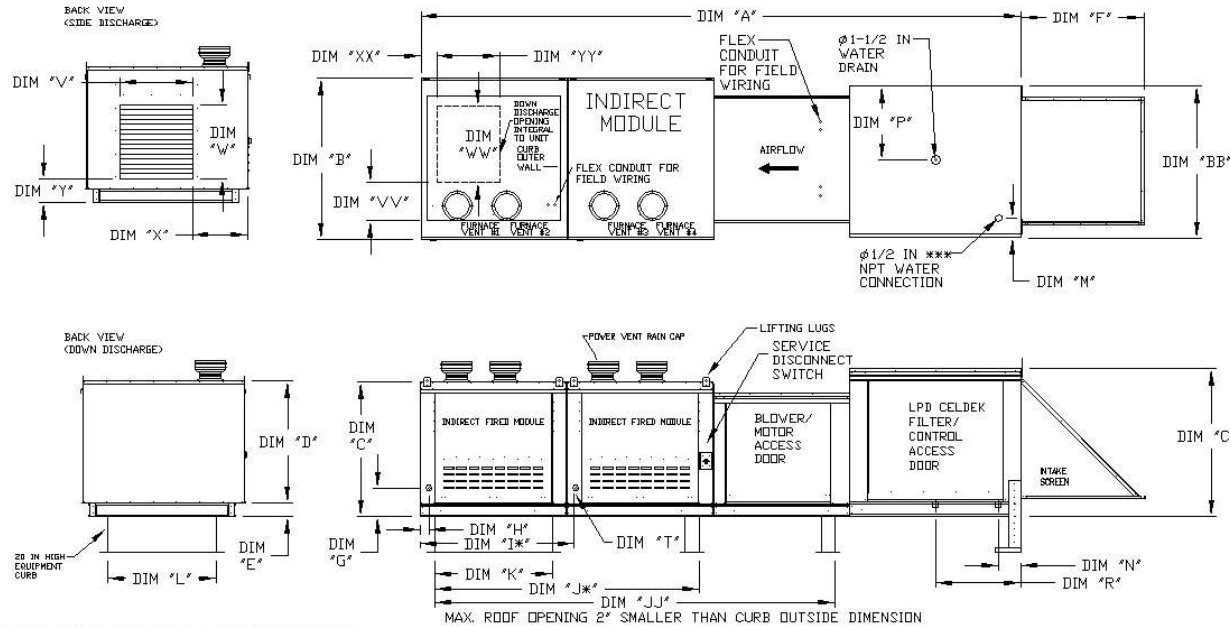


MODULAR OUTDOOR IBT HEATER WITH LPD EVAPORATIVE COOLER AND SCREEN INTAKE

STLFD050017
REV. #9 05/13/2016



ALL DIMENSIONS ARE NOMINAL AND GIVEN IN INCHES.

MODEL	UNIT DIMENSIONS																WATER INLET		DRAIN OPENING		SIDE DISCHARGE OPENING				DOWN DISCHARGE OPENING				GAS CONNECTION 'T' (NPT)	# OF FURNACES
	A	B	BB	C	CC	D	E	F	G	H	I	J	JJ	K	L	M	N	P	R	V	W	X	Y	VV	WW	XX	YY	'T' (NPT)		
1-IBT150	124-1/2	49-1/2	36-3/4	39-3/8	36-3/4	35-13/16	3-3/4	39-5/16	8-3/4	2-11/16	N/A	N/A	89-3/16	71	21	4-1/2	6-1/4	18	18	17-3/4	17-3/4	18-1/2	7-1/4	3	16-3/4	3-1/8	21	3/4	1	
1-IBT200	124-1/2	49-1/2	36-3/4	39-3/8	36-3/4	35-13/16	3-3/4	39-5/16	8-3/4	2-11/16	N/A	N/A	89-3/16	71	21	4-1/2	6-1/4	18	18	17-3/4	17-3/4	18-1/2	7-1/4	3	16-3/4	3-1/8	21	3/4	1	
1-IBT300-150-150	124-1/2	49-1/2	36-3/4	39-3/8	36-3/4	35-13/16	3-3/4	39-5/16	8-3/4	2-11/16	N/A	N/A	89-3/16	71	21	4-1/2	6-1/4	18	18	17-3/4	17-3/4	18-1/2	7-1/4	3	16-3/4	3-1/8	21	3/4	2	
1-IBT400-200-200	124-1/2	49-1/2	36-3/4	39-3/8	36-3/4	35-13/16	3-3/4	39-5/16	8-3/4	2-11/16	N/A	N/A	89-3/16	71	21	4-1/2	6-1/4	18	18	17-3/4	17-3/4	18-1/2	7-1/4	3	16-3/4	3-1/8	21	3/4	2	
2-IBT200	198-1/2	49-1/2	40-3/4	39-3/8	43-3/8	50-1/8	3-3/4	39-5/16	8-3/4	2-11/16	N/A	N/A	97-3/16	79	31	4-1/2	5-3/4	28	19	24-1/2	17-3/4	18-1/2	7-1/4	5	24	3-1/8	21	1	1	
2-IBT300	198-1/2	49-1/2	40-3/4	39-3/8	43-3/8	50-1/8	3-3/4	39-5/16	8-3/4	2-11/16	N/A	N/A	97-3/16	79	31	4-1/2	5-3/4	28	19	24-1/2	17-3/4	18-1/2	7-1/4	5	24	3-1/8	21	1	1	
2-IBT400-200-200	198-1/2	49-1/2	40-3/4	39-3/8	43-3/8	50-1/8	3-3/4	39-5/16	8-3/4	2-11/16	N/A	N/A	97-3/16	79	31	4-1/2	5-3/4	28	19	24-1/2	17-3/4	18-1/2	7-1/4	5	24	3-1/8	21	1	1	
2-IBT600-300-300	198-1/2	49-1/2	40-3/4	39-3/8	43-3/8	50-1/8	3-3/4	39-5/16	8-3/4	2-11/16	N/A	N/A	97-3/16	79	31	4-1/2	5-3/4	28	19	24-1/2	17-3/4	18-1/2	7-1/4	5	24	3-1/8	21	1	2	
2-IBT900-400-400	198-1/2	49-1/2	40-3/4	39-3/8	43-3/8	50-1/8	3-3/4	39-5/16	8-3/4	2-11/16	N/A	N/A	97-3/16	79	31	4-1/2	5-3/4	28	19	24-1/2	17-3/4	18-1/2	7-1/4	5	24	3-1/8	21	1	2	
3-IBT400	140-5/8	57-3/4	47-7/8	57-1/8	51-3/8	51-13/16	5-1/4	47-1/4	10-3/4	2-11/16	N/A	N/A	102-3/16	84	35	4-1/2	5-3/4	23-1/2	17-1/2	27-1/2	31	18-1/2	6-3/4	6-3/4	26-1/2	4-1/8	26-1/2	1	1	
3-IBT600-300-300	140-5/8	57-3/4	47-7/8	57-1/8	51-3/8	51-13/16	5-1/4	47-1/4	10-3/4	2-11/16	N/A	N/A	102-3/16	84	35	4-1/2	5-3/4	23-1/2	17-1/2	27-1/2	31	18-1/2	6-3/4	6-3/4	26-1/2	4-1/8	26-1/2	1	2	
3-IBT900-400-400	140-5/8	57-3/4	47-7/8	57-1/8	51-3/8	51-13/16	5-1/4	47-1/4	10-3/4	2-11/16	N/A	N/A	102-3/16	84	35	4-1/2	5-3/4	23-1/2	17-1/2	27-1/2	31	18-1/2	6-3/4	6-3/4	26-1/2	4-1/8	26-1/2	1	2	
3-IBT1200-400-400-400	140-5/8	57-3/4	47-7/8	57-1/8	51-3/8	51-13/16	5-1/4	47-1/4	10-3/4	2-11/16	N/A	N/A	102-3/16	84	35	4-1/2	5-3/4	23-1/2	17-1/2	27-1/2	31	18-1/2	6-3/4	6-3/4	26-1/2	4-1/8	26-1/2	1	2	
4-IBT400	193-11/16	57-3/4	58-5/8	57-1/8	58-5/8	51-13/16	5-1/4	49-5/8	10-3/4	2-11/16	N/A	N/A	101-1/4	42	42	4-1/2	5-3/4	28-7/8	17-1/2	28-1/2	34	18-1/2	6-3/4	6-1/2	26-1/2	4-1/8	26-1/2	1	1	
4-IBT600-400-400	193-11/16	57-3/4	58-5/8	57-1/8	58-5/8	51-13/16	5-1/4	49-5/8	10-3/4	2-11/16	N/A	N/A	101-1/4	42	42	4-1/2	5-3/4	28-7/8	17-1/2	28-1/2	34	18-1/2	6-3/4	6-1/2	26-1/2	4-1/8	26-1/2	1	2	
4-IBT1000-300-300-400	193-11/16	57-3/4	58-5/8	57-1/8	58-5/8	51-13/16	5-1/4	49-5/8	10-3/4	2-11/16	N/A	N/A	101-1/4	42	42	4-1/2	5-3/4	28-7/8	17-1/2	28-1/2	34	18-1/2	6-3/4	6-1/2	26-1/2	4-1/8	26-1/2	1	2	
4-IBT1200-300-300-400	193-11/16	57-3/4	58-5/8	57-1/8	58-5/8	51-13/16	5-1/4	49-5/8	10-3/4	2-11/16	N/A	N/A	101-1/4	42	42	4-1/2	5-3/4	28-7/8	17-1/2	28-1/2	34	18-1/2	6-3/4	6-1/2	26-1/2	4-1/8	26-1/2	1	2	
4-IBT1600-400-400-400	193-11/16	57-3/4	58-5/8	57-1/8	58-5/8	51-13/16	5-1/4	49-5/8	10-3/4	2-11/16	N/A	N/A	101-1/4	42	42	4-1/2	5-3/4	28-7/8	17-1/2	28-1/2	34	18-1/2	6-3/4	6-1/2	26-1/2	4-1/8	26-1/2	1	4	
5-IBT400	169-11/16	66-3/8	74-7/8	59-15/16	58-3/8	54-11/16	5-1/4	49-5/8	10-3/4	2-11/16	N/A	N/A	101-1/4	52-3/4	52-3/4	4-1/2	5-3/4	37-1/2	17-1/2	36-1/2	34	18-1/2	6-3/4	36	3-1/8	27-1/2	1	1		
5-IBT600-400-400	169-11/16	66-3/8	74-7/8	59-15/16	58-3/8	54-11/16	5-1/4	49-5/8	10-3/4	2-11/16	N/A	N/A	101-1/4	52-3/4	52-3/4	4-1/2	5-3/4	37-1/2	17-1/2	36-1/2	34	18-1/2	6-3/4	36	3-1/8	27-1/2	1	2		
5-IBT1000-300-300-400	169-11/16	66-3/8	74-7/8	59-15/16	58-3/8	54-11/16	5-1/4	49-5/8	10-3/4	2-11/16	N/A	N/A	101-1/4	52-3/4	52-3/4	4-1/2	5-3/4	37-1/2	17-1/2	36-1/2	34	18-1/2	6-3/4	36	3-1/8	27-1/2	1	2		
5-IBT1200-400-400-400	169-11/16	66-3/8	74-7/8	59-15/16	58-3/8	54-11/16	5-1/4	49-5/8	10-3/4	2-11/16	N/A	N/A	101-1/4	52-3/4	52-3/4	4-1/2	5-3/4	37-1/2	17-1/2	36-1/2	34	18-1/2	6-3/4	36	3-1/8	27-1/2	1	2		
5-IBT1600-300-300-400-400	169-11/16	66-3/8	74-7/8	59-15/16	58-3/8	54-11/16	5-1/4	49-5/8	10-3/4	2-11/16	N/A	N/A	101-1/4	52-3/4	52-3/4	4-1/2	5-3/4	37-1/2	17-1/2	36-1/2	34	18-1/2	6-3/4	36	3-1/8	27-1/2	1	4		
5-IBT1600-400-400-400-400	169-11/16	66-3/8	74-7/8	59-15/16	58-3/8	54-11/16	5-1/4	49-5/8	10-3/4	2-11/16	N/A	N/A	101-1/4	52-3/4	52-3/4	4-1/2	5-3/4	37-1/2	17-1/2	36-1/2	34	18-1/2	6-3/4	36	3-1/8	27-1/2	1	4		

UNIT INFORMATION

MODEL	CAPACITY (MBH)**			TURNDOWN RATIO	COMBUSTION EFFICIENCY***	GAS PRESSURE****			CELDEK EVAPORATIVE COOLING UNIT		
	BURNER INPUT	MIN	MAX			MIN	MAX	TOT. WEIGHT	MEDIA SIZE & QTY	NOZZLES	MAX. FLOW RATE
1-IBT150	120	24	120	6	80.0%	7" WC	14" WC	362 LBS	25"x32"x42"	20	6.5 GPH
1-IBT200	200	26.7	160	6	80.0%	7" WC	14" WC	382 LBS	25"x32"x42"	20	6.5 GPH
1-IBT300-150-150	300	28	240	12	80.0%	7" WC	14" WC	1067 LBS	25"x32"x42"	20	6.5 GPH
1-IBT400-200-200	400	26.7	220	12	80.0%	7" WC	14" WC	1141 LBS	25"x32"x42"	20	6.5 GPH
2-IBT200	200	26.7	160	6	80.0%	7" WC	14" WC	1235 LBS	30"x36"x42"	20	6.4 GPH
2-IBT300	300	44	240	6	80.0%	7" WC	14" WC	1327 LBS	30"x36"x42"	20	6.4 GPH
2-IBT400-200-200	400	53.9	320	6	80.0%	7" WC	14" WC	1406 LBS	30"x36"x42"	20	6.4 GPH
2-IBT600-300-300	600	44	480	12	80.0%	7" WC	14" WC	1294 LBS	30"x36"x42"	20	6.4 GPH
2-IBT900-400-400	900	53.9	640	12	80.0%	7" WC	14" WC	1551 LBS	30"x36"x42"	20	6.4 GPH
3-IBT400	400	53.9	320	6	80.0%	7" WC	14" WC	1708 LBS	30"x42"x42"	20	6.5 GPH
3-IBT600-400-400	600	44	480	12	80.0%	7" WC	14" WC	1900 LBS	30"x42"x42"	20	6.5 GPH
3-IBT900-400-400	900	53.9	640	12	80.0%	7" WC	14" WC	2408 LBS	30"x42"x42"	35	10.5 GPH
3-IBT1000-300-300-400	1000	44	800	20	80.0%	7" WC	14" WC	2777 LBS	38"x42"x42"	35	10.5 GPH
3-IBT1200-400-400-400	1200	53.9	960	18	80.0%	7" WC	14" WC	2897 LBS	38"x42"x42"	35	10.5 GPH
4-IBT400	400	53.9	320	6	80.0%	7" WC	14" WC	3078 LBS	45"x42"x42"	42	12.6 GPH
4-IBT600-400-400	600	44	480	12	80.0%	7" WC	14" WC	2989 LBS	45"x42"x42"	42	12.6 GPH
4-IBT1000-300-300-400	1000	44	800	20	80.0%	7" WC	14" WC	3272 LBS	45"x42"x42"	42	12.6 GPH
4-IBT1200-400-400-400	1200	53.9	960	18	80.0%	7" WC	14" WC	3384 LBS	45"x42"x42"	42	12.6 GPH
4-IBT1400-300-300-400-400	1400	44	1120	20	80.0%	7" WC	14" WC	3496 LBS	45"x42"x42"	42	12.6 GPH
4-IBT1600-400-400-400-400	1600	53.9	1280	24	80.0%	7" WC	14" WC	3688 LBS	45"x42"x42"	42	12.6 GPH
5-IBT400	400	53.9	320	6	80.0%	7" WC	14" WC	2700 LBS	45"x72"x42"	57	20.1 GPH
5-IBT600-400-400	600	53.9	480	12	80.0%	7" WC	14" WC	2927 LBS	45"x72"x42"	57	20.1 GPH
5-IBT1000-300-300-400	1000	44	800	20	80.0%	7" WC	14" WC	3749 LBS	45"x72"x42"	57	20.1 GPH
5-IBT1200-400-400-400	1200	53.9	960	18	80.0%	7" WC	14" WC	3851 LBS	45"x72"x42"	57	20.1 GPH
5-IBT1400-300-300-400-400	1400	44	1120	20	80.0%	7" WC	14" WC	3993 LBS	45"x72"x42"	57	20.1 GPH
5-IBT1600-400-400-400-400	1600	53.9	1280	24	80.0%	7" WC	14" WC	4105 LBS	45"x72"x42"	57	20.1 GPH

* ADDITIONAL RAIL/GAS CONNECTION
ONLY FOR UNITS WITH 3 OR 4 FURNACES

**ALL MODELS ARE FULLY
ELECTRONICALLY MODULATING

*** COMBUSTION EFFICIENCY
OF EVERY UNIT IS 80.0% OVER
THE ENTIRE GAS FIRING RANGE.

**** GAS PRESSURES IN TABLE ARE
FOR NATURAL GAS, LP MINIMUM GAS
INLET PRESSURE = 11" V.C.

MAX. EVAP WATER PRESSURE =
50 PSI @ 70 DEG. F